

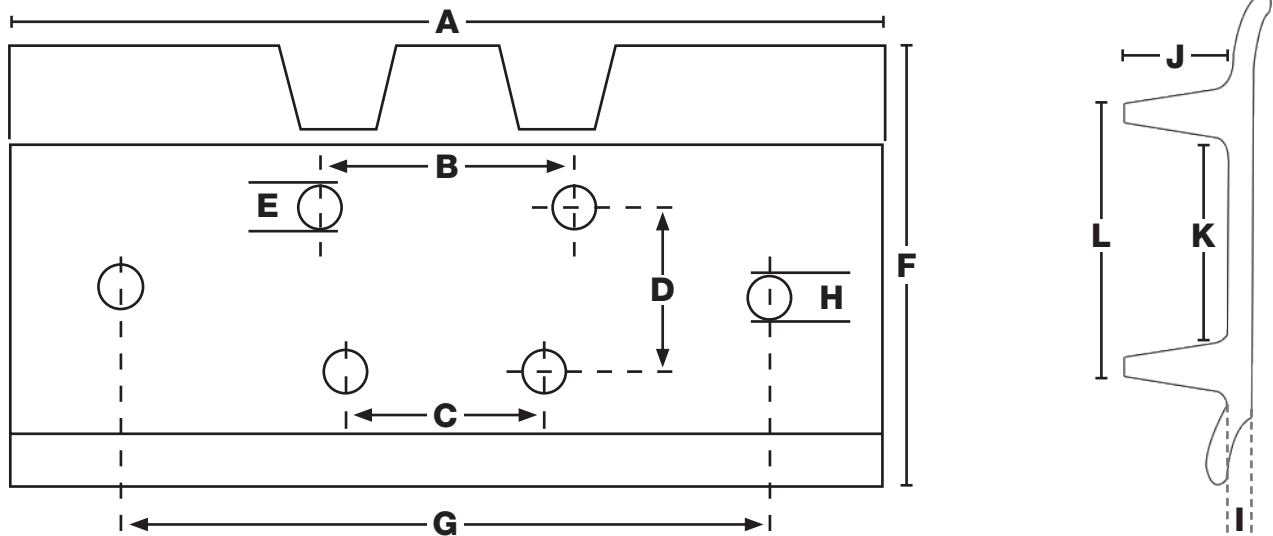


DOUBLE BAR GROUSER WORKSHEET

Please Complete and Send to Your Sales Consultant

Machine Manufacturer: _____

Machine Model #: _____



Measurements (inch or mm):

- | | |
|---|--|
| A = _____ Grouser Width | G = _____ Horizontal Distance Between Centers of Exterior Bolt Holes |
| B = _____ Distance Between the Centers of the Top Set of Holes | H = _____ Secondary Holes Diameter |
| C = _____ Distance Between the Centers of the Bottom Set of Holes | I = _____ Grouser Thickness |
| D = _____ Vertical Distance Between Centers of Both Sets of Holes | J = _____ Height of Grouser Bar |
| E = _____ Bolt-Hole Diameter | K = _____ Flat Area Between Grousers |
| F = _____ Front to Back Distance | L = _____ Distance Between Outside Edges of Grouser Bars |

Quantity of Pads Needed _____

Customer Information:

Name: _____ Company: _____

Phone: _____ Email: _____

**IF YOU HAVE ANY QUESTIONS REGARDING THIS WORKSHEET,
 PLEASE CONTACT YOUR SALES CONSULTANT**